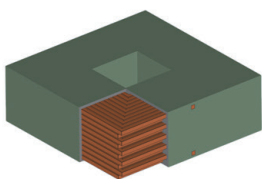


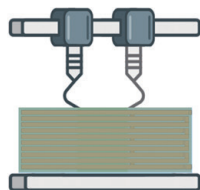
Industrial independent dual nozzle 3D printer

UPS - 250 based on UPRISE3D pioneering powder extrusion printing technology (PEP), USES the independent double nozzle design, can print or each took turns to print at the same time for different kinds of materials in the metal and ceramic composite product development, The product forming of complex structure has the advantages of simple operation, industrial type, high precision, high quality and high cost performance.

Suitable for scientific research and education, industrial manufacturing, aerospace, military and national defense, biomedical, automotive, mold manufacturing, new energy and other fields of 3D printing technology development, material development and rapid development and manufacturing of metal/ceramic products.



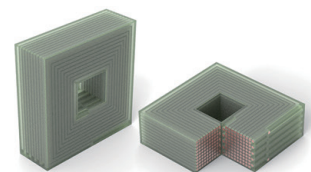
DESIGN



3D PRINTING



DEBINDING & SINTERING



PRODUCTS

DEVICE ADVANTAGES

Material compatibility: Independent dual nozzle design, a device can print multiple materials, also can print metal & ceramic at the same time or in turn.

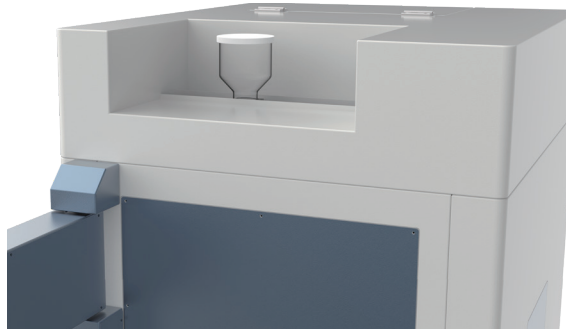
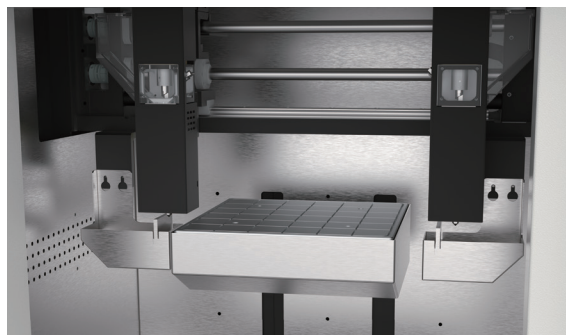
Material diversity: Based on PIM materials for secondary development and adaptation, materials can be recycled.

Convenience: Negative pressure adsorption forming platform, easy installation and disassembly.

Humanize: automatic feeding function, can realize unguarded long time printing.

Automation: nozzle automatic wipe function, alleviate nozzle sticky phenomenon.

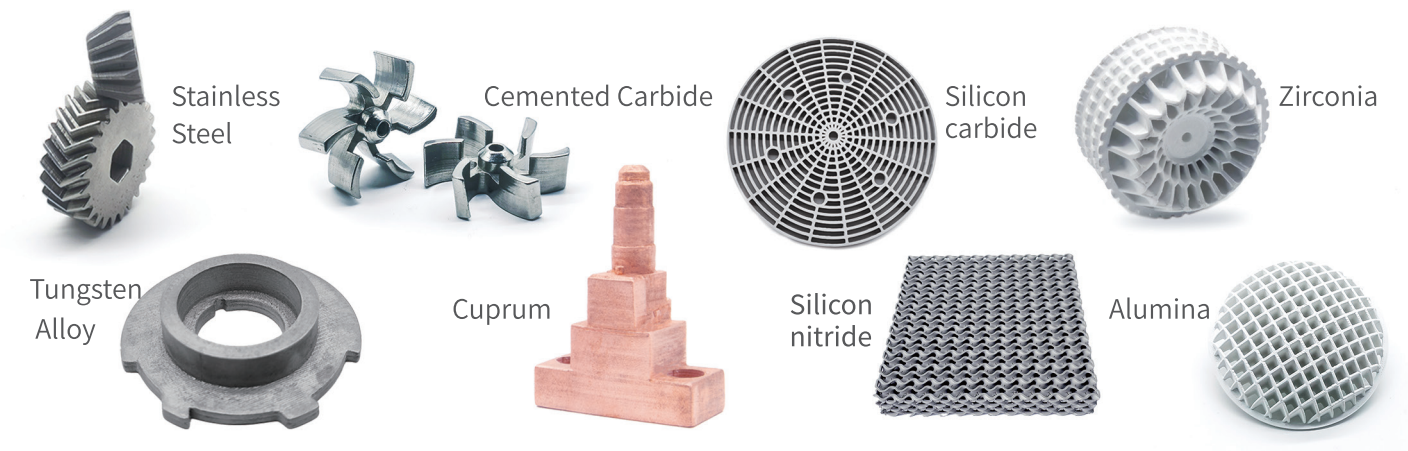
Print stability: Thermostatic chamber controlled by inlet hot wind, which prevents the product from cracking.



DEVICE PARAMETERS

Printing technology	Powder Extrusion Printing
Equipment Size	1140mm×950mm×1850mm
Printing Size	500mm×500mm×600mm
Print Layer Thickness	0.05-0.3mm
Nozzle Accuracy	0.3-0.8mm(standard 0.4mm)
Printing Speed	90~180cm ³ /hr

PRINTING MATERIALS



SHENZHEN UPRISE 3D TECHNOLOGY CO.,LTD

☎ : 0755-2710 9017

✉ : sales@uprise3d.cn

📍 : 8 Huiye Road, Guangming District, Shenzhen, China

