



UPRISE 3D  
 升华三维

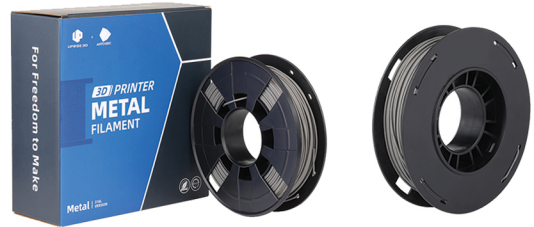
# 3D PRINTING MATERIAL

316L STAINLESS STEEL METAL FILAMENT

## UPFM-316L

### 01 PRODUCT INTRODUCTION

UPFM-316L is a new type of metal filament developed by UPRISE 3D, a composite material mixed with metal and polymer binder, which can be used to produce 316L stainless steel metal parts. Through FFF 3D printer, you can quickly print out the preset model green parts layer by layer, and then get the final compact metal parts through debinding and sintering.



### 02 PRODUCT FEATURES

- High metal content, easy handling and hard to be broken
- Odorless and smoke-free during printing
- High quality guarantees stable printing process

### 03 PRODUCT PARAMETERS

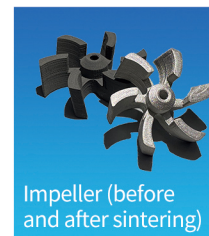
Filament parameters	Material	316L stainless steel
	Diameter	1.75±0.05mm
	Length	~70m
	Net weight	~750g
	Print temp	230-240°C
	Hotbed temp	85-95°C
	Shrinkage	X,Y:1.2/Z:1.24
Properties of sintered parts	Quality certification	ROHS/Reach
	Density	7.93g/cm <sup>3</sup>
	Yield strength	197MPa
	Tensile strength	521MPa
	Elongation at break	52.7%
	Hardness	165.7HV1
	Surface roughness	4.91µm

### 04 PRODUCT ADVANTAGES

The most common method for metal 3d printing is so-called Selective Laser Melting (SLM) technology. However, this method is significant expensive, and requires long term training. Also, related safety issue needs to pay special attention. By using 316L filament, start-up investment is relatively low, as commercial FFF 3D printer is cheap.

By simply pressing a few buttons on printer, you can get your metal parts within couple of hours. Using 316L filament, you can print anything from one-off prototype to high volume industrial manufacturing, from customized metal crafts to any complex geometries.

### 05 PRINTED SAMPLES



### Contact us

Phone: (+86)13392420572 / (+86)13392421307 / (+86)15813725662  
 Add: 401, 4th Floor, Building 4B, Huiye Science Park, No.8 Huiye Road, Tangjia Community, Fenghuang Street, Guangming District, Shenzhen

Email: sales@uprise3d.cn  
 Web: www.uprise3d.com